

Cornell University

# Fall 2009 Undergraduate Enrollment Report\*

Catherine J Alvord and Marin E Clarkberg  
Institutional Research and Planning  
440 Day Hall • Ithaca, NY 14853-2801

## Contents

---

A. Total Undergraduate Enrollment .....	1
B. First-Time, Full-Time First Year Undergraduates .....	5
C. External Transfers .....	10

---

\* Throughout this report the following abbreviations apply:

AG: Agriculture & Life Sciences  
AR: Architecture, Arts & Planning  
AS: Arts & Sciences  
EN: Engineering  
HA: Hotel Administration  
HE: Human Ecology  
IL: Industrial & Labor Relations

## A. Total On-Campus Enrollment

### Observations

- Fall 2001 First-Year Freshman Enrollment Planning articulated a goal of 13,000 undergraduates
- Between Fall 2001 and Fall 2007, undergraduate enrollments trended towards goal of 13,000
- At 13,931, Fall 2009 undergraduate enrollment was at an all-time high (see Figure A.1)
- Three colleges have decreased total enrollments over a recent interval (see Figure A.2):
  - Arts & Sciences (down 233 students since 2001)
  - Human Ecology (down 138 students since 2001)
  - Architecture, Art & Planning (down 80 students since 2003)
- Under-represented minority (in this report, URMs are Black, Hispanic, and Native American) enrollment for Fall 2009 is 2,066, or 15% of undergraduate enrollment (see Figure A.3).
- Over the last two decades, Hispanic enrollment has increased more rapidly than Black enrollment (see Figure A.4)
- While total undergraduate enrollment is 49% female, the percentage of women in the undergraduate student body varies substantially by college (see Figure A.5)

Figure A.1. Fall Undergraduate Enrollment, Fall 1980 – Fall 2009

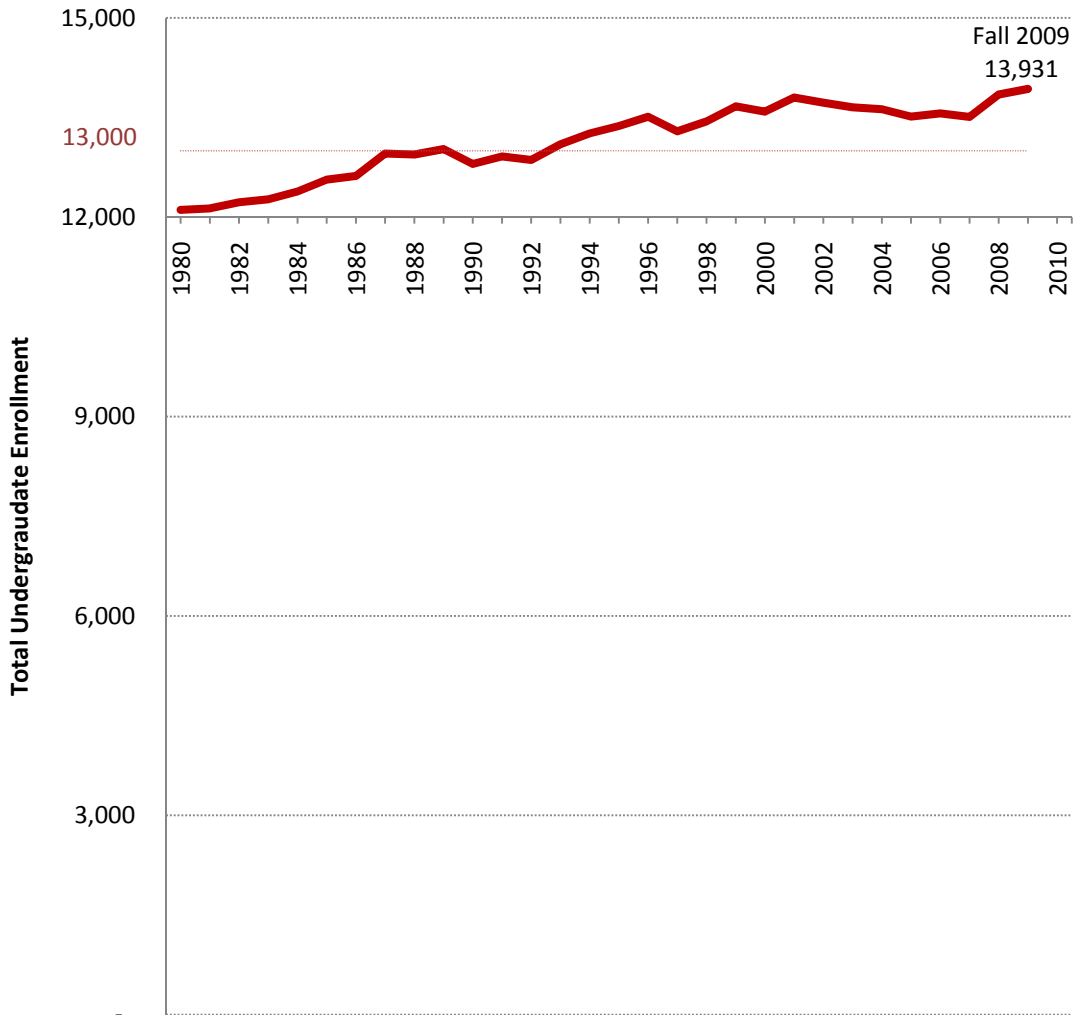


Figure A.2. Undergraduate Enrollment, Fall 1980–Fall 2009, by College

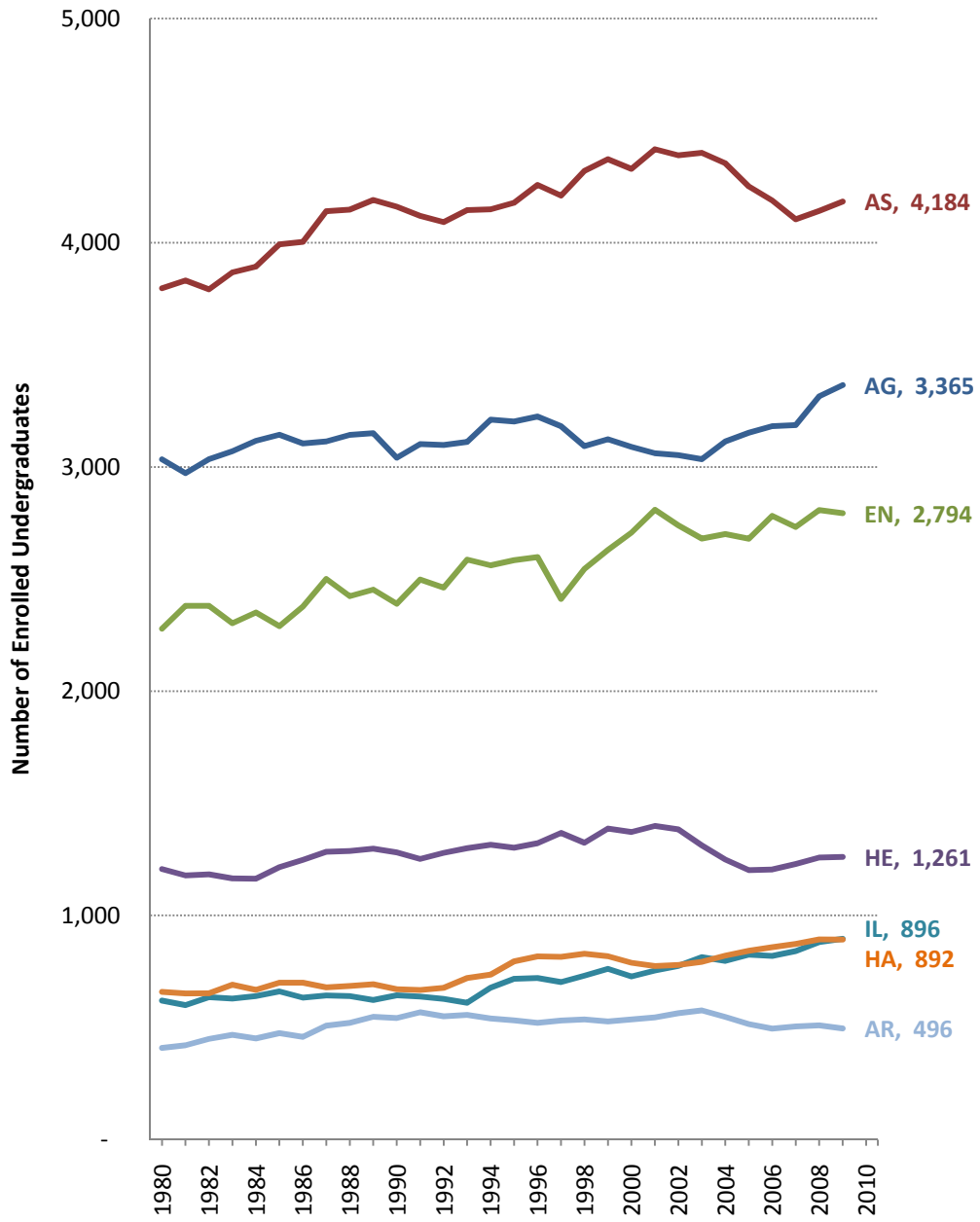
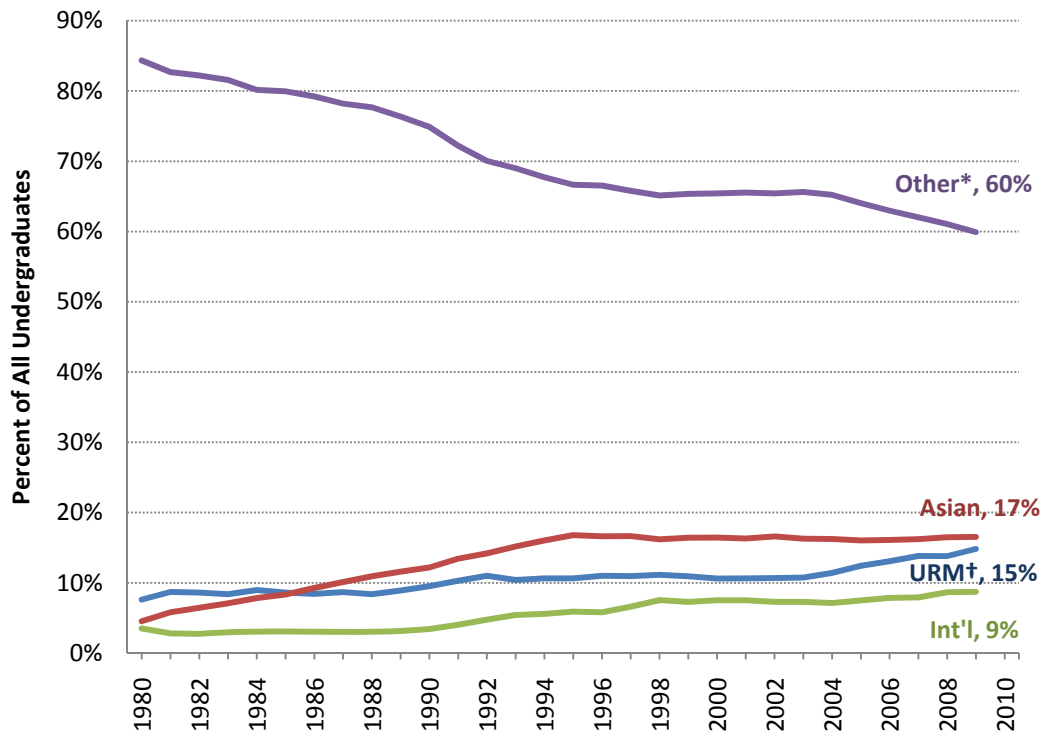


Figure A.3. Percent of Enrolled Undergraduates by Race/Ethnicity/Citizenship, Fall 1980–Fall 2009



\* Category includes White, mixed race non-URM, and unknown race

† Category includes Black, Hispanic, Native American and, since 2002, mixed URM race identities

Figure A.4. Percent of Enrolled Undergraduates that are Hispanic, Black or Native American, Fall 1980–Fall 2009

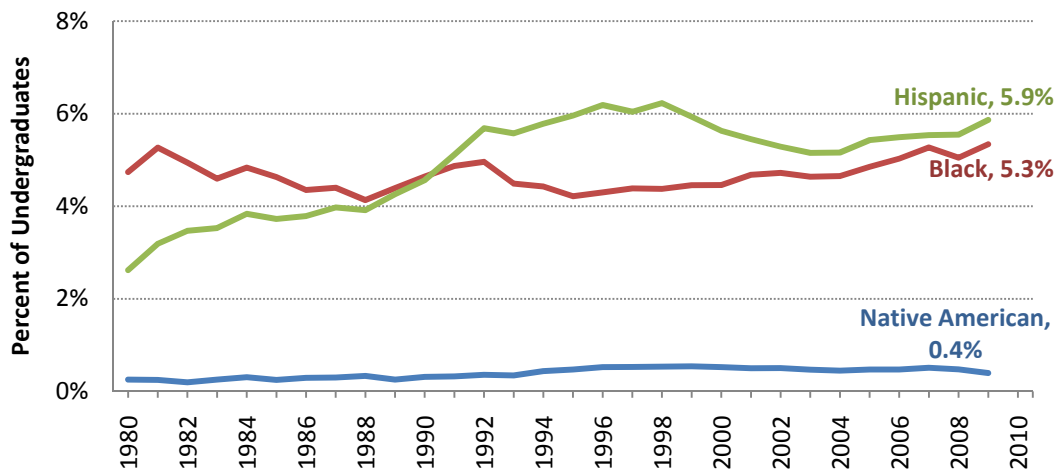
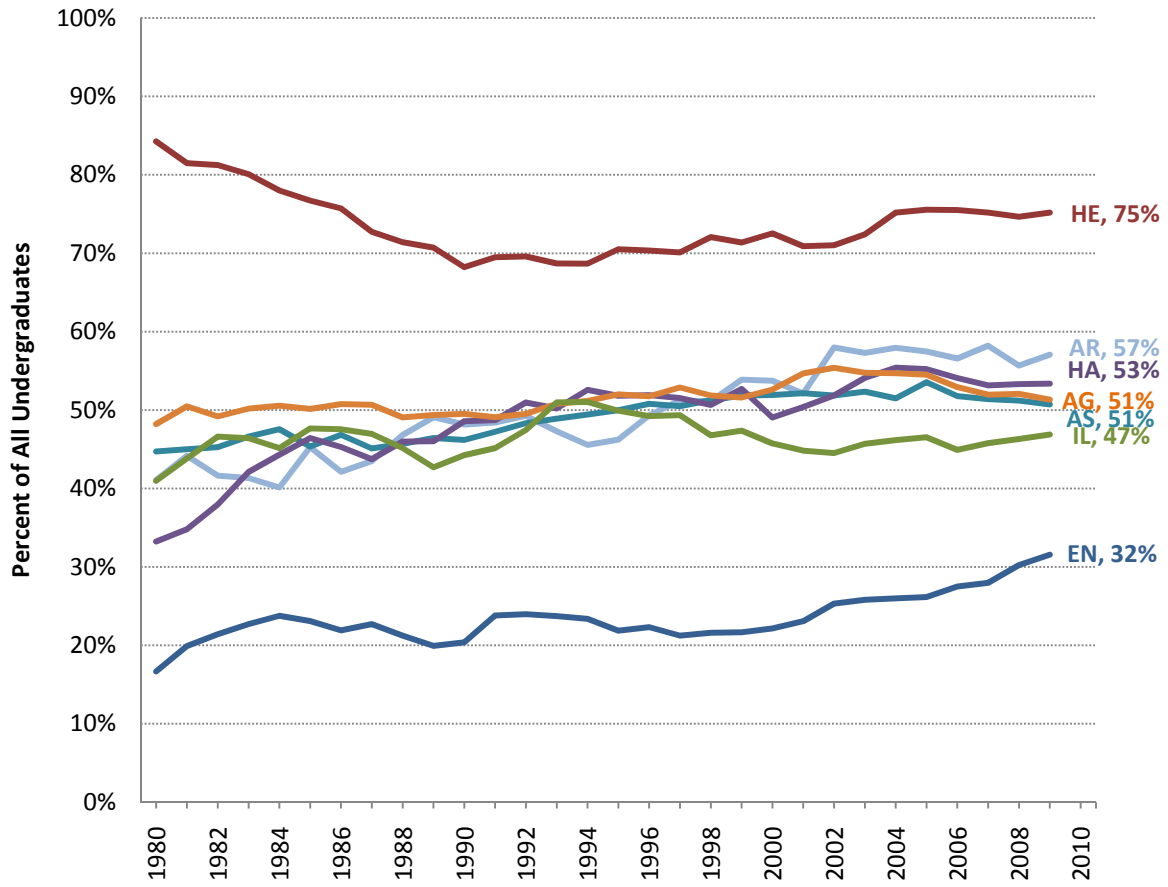


Figure A.5. Percent of Enrolled Undergraduates that are Women, Fall 1980–Fall 2009, by College



## B. First-Time, Full-Time First Year Students

### Observations

- Enrollment Targets
  - Strategic First-Year Freshman Enrollment Plan of 2001
    - Sought to increase discipline over enrollment management, especially in light of the North Campus Residential Initiative
    - Established enrollment target of 3,000 fall first-time freshman
  - When January admissions were suspended in Fall 2003, target for first-time freshman was revised to 3,050
  - In Fall 2009, enrollment target increased to 3,150
- Largest freshman class was fall 1993 with 3,196 first-time freshmen (Figure B.1)
- Arts & Sciences freshman enrollment increased 106 students between Fall 2007 and Fall 2009 (see Figure B.2)
- The percentage of new students that are under-represented minorities (URM) increased from 14.0% in Fall 2008 to 18.9% in Fall 2009 (see Figure B.3)
- Black student matriculation increased from 4.3% in Fall 2008 to 6.7% in Fall 2009; Hispanic matriculation increased from 5.7% to 7.6% over the same period (see Figure B.4)
- The first-year classes of Human Ecology and Architecture, Art & Planning are clearly majority female, 76% and 61% women in Fall 2009 respectively. Engineering’s first year students were 37% female, an increase from less than 20% female two decades earlier (see Figure B.5)
- At 39%, the percentage of freshmen admitted through Early Decision was a record high (see Figure B.6). The next highest percent was 37% in 2002.
- The percent of first-time first year undergraduates receiving financial aid increased from 40% to 51% between Fall 2008 and Fall 2009 (see Figure B.7).

**Figure B.1. First-Time, Full-Time First Year Enrollment, Fall 1980–Fall 2009**

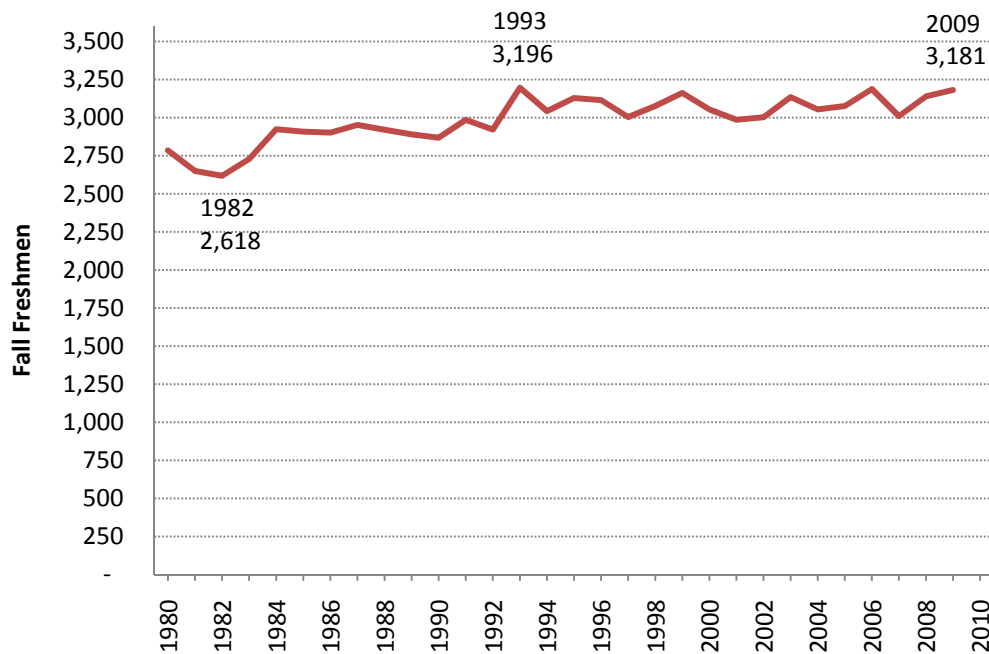


Figure B.2. First-Time, Full-Time First Year Students, Fall 1987–Fall 2009, By College

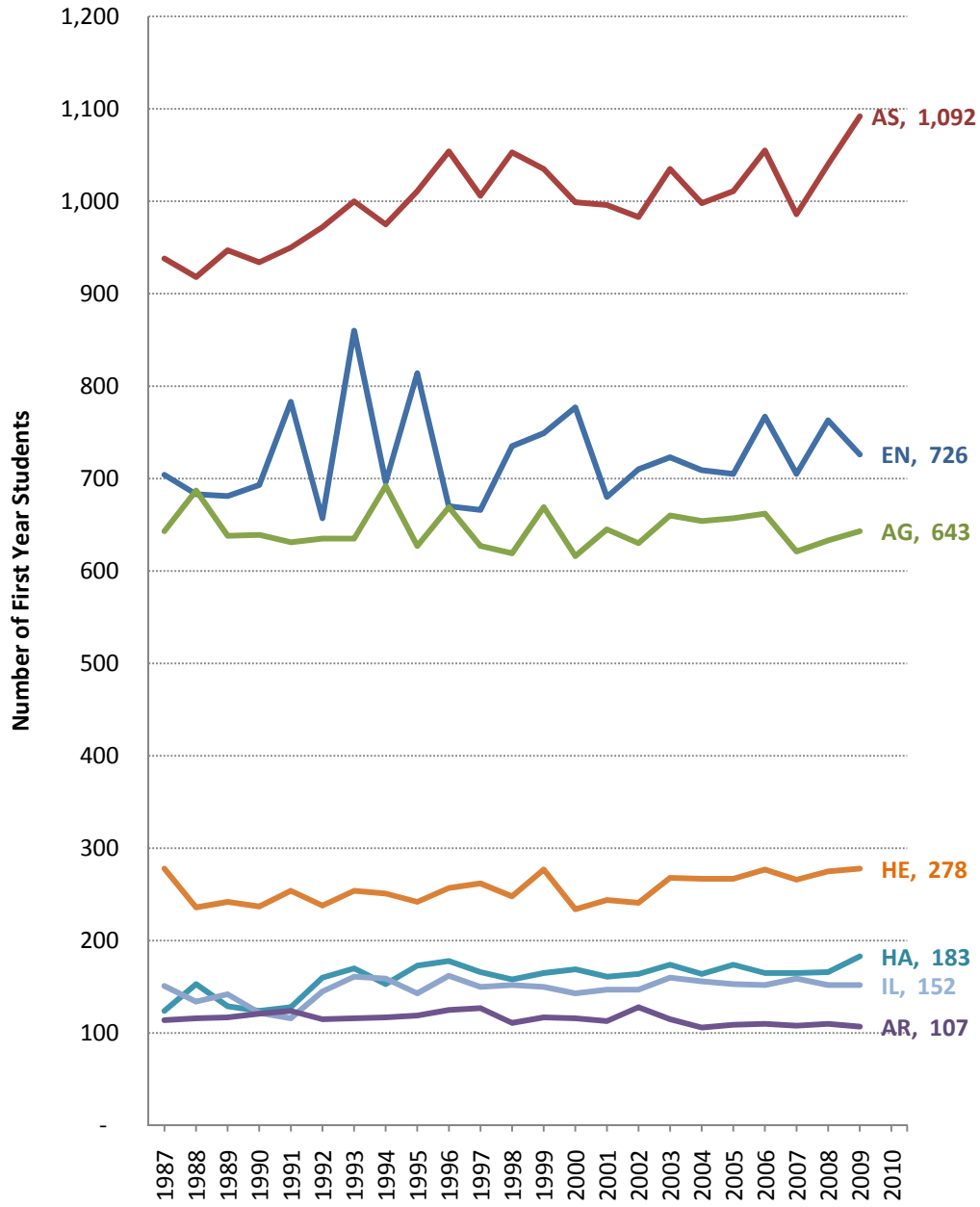
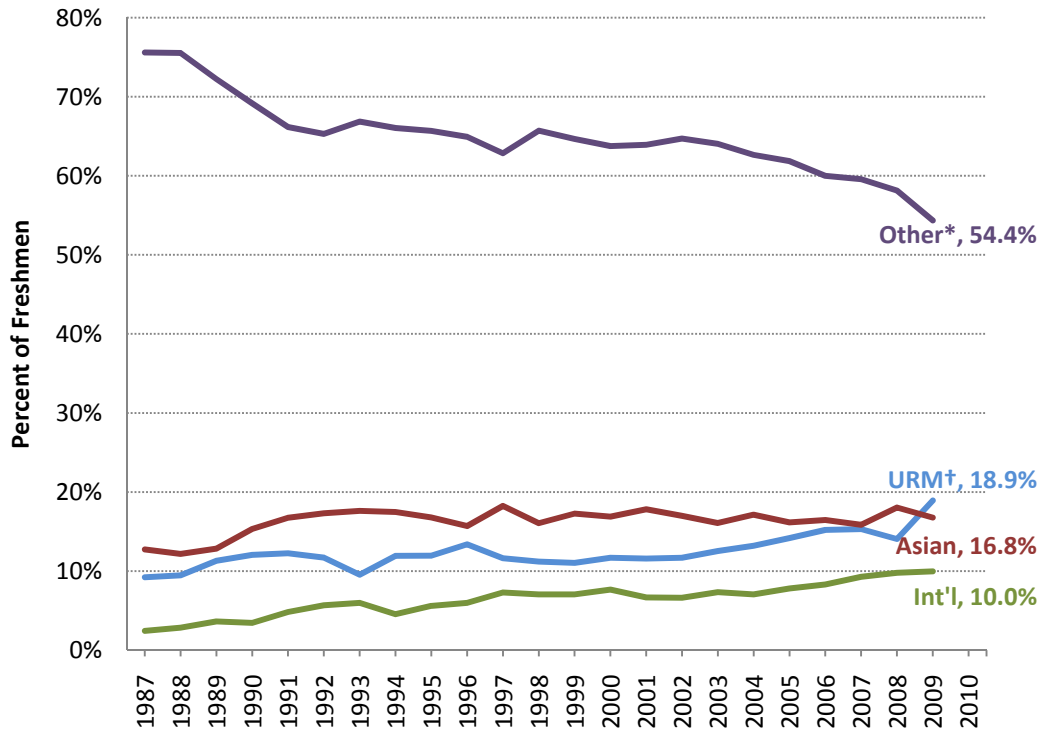


Figure B.3. First-Time, Full-Time First Year Students by Race/Ethnicity/Citizenship, Fall 1987–Fall 2009



\* Category includes White, mixed race non-URM, and unknown race

† Category includes Black, Hispanic, Native American and, since 2002, mixed race identities

Figure B.4. Percent of First-Time, Full-Time First Year Students that are Hispanic, Black or Native American, Fall 1987–Fall 2009

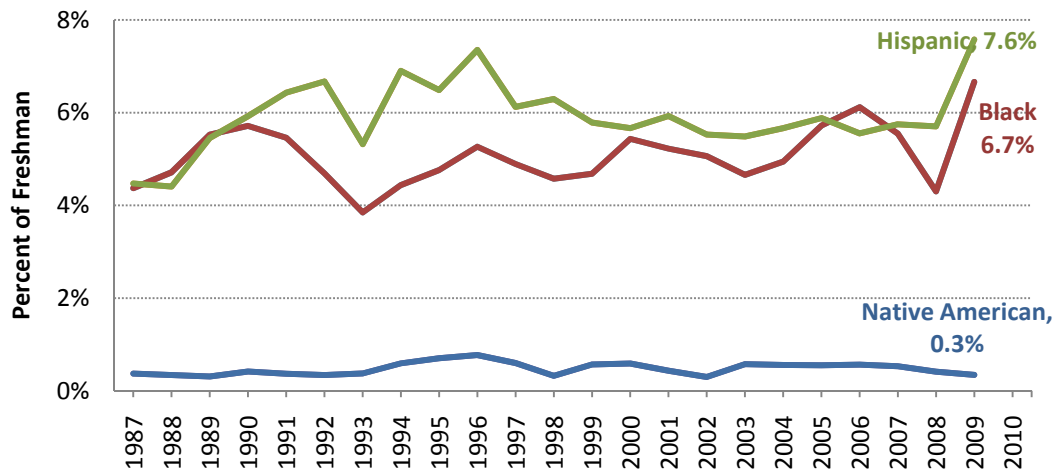




Figure B.5. Percent of First-Time Freshmen that are Women, Fall 1980–Fall 2009

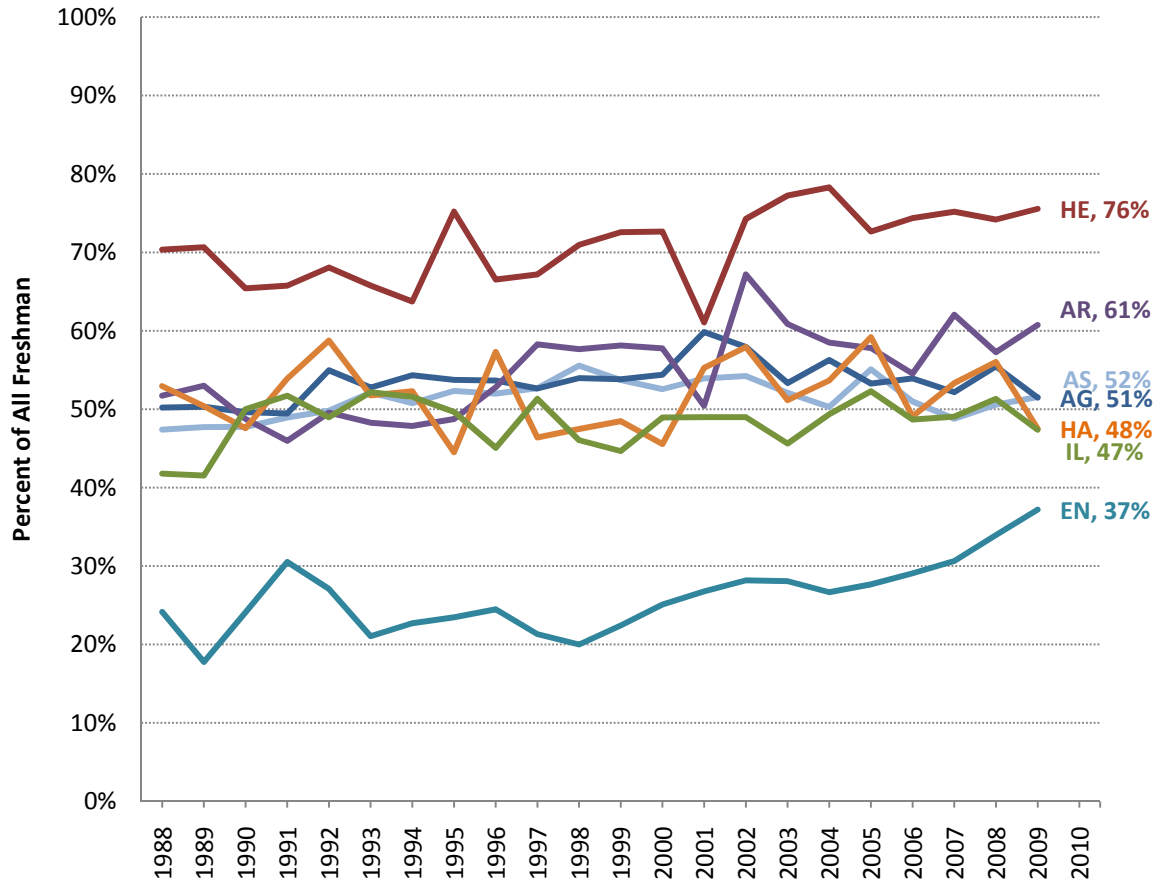
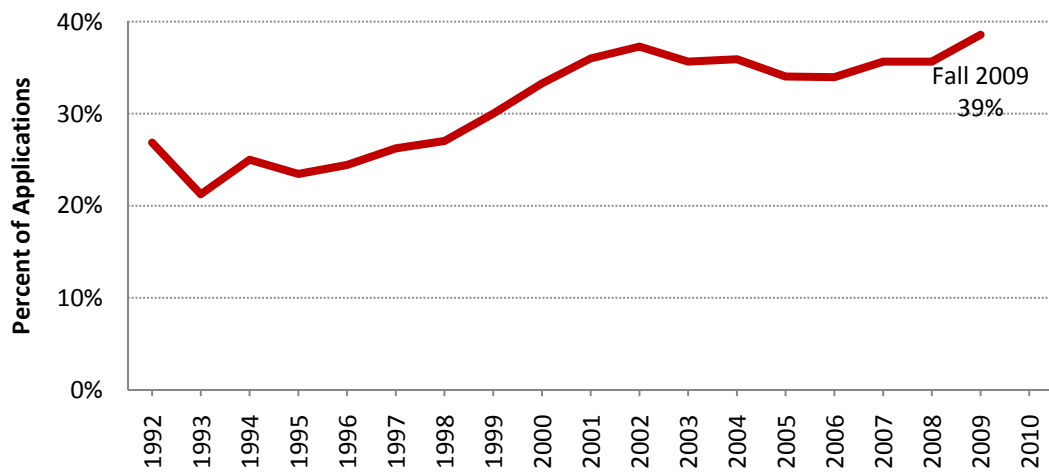
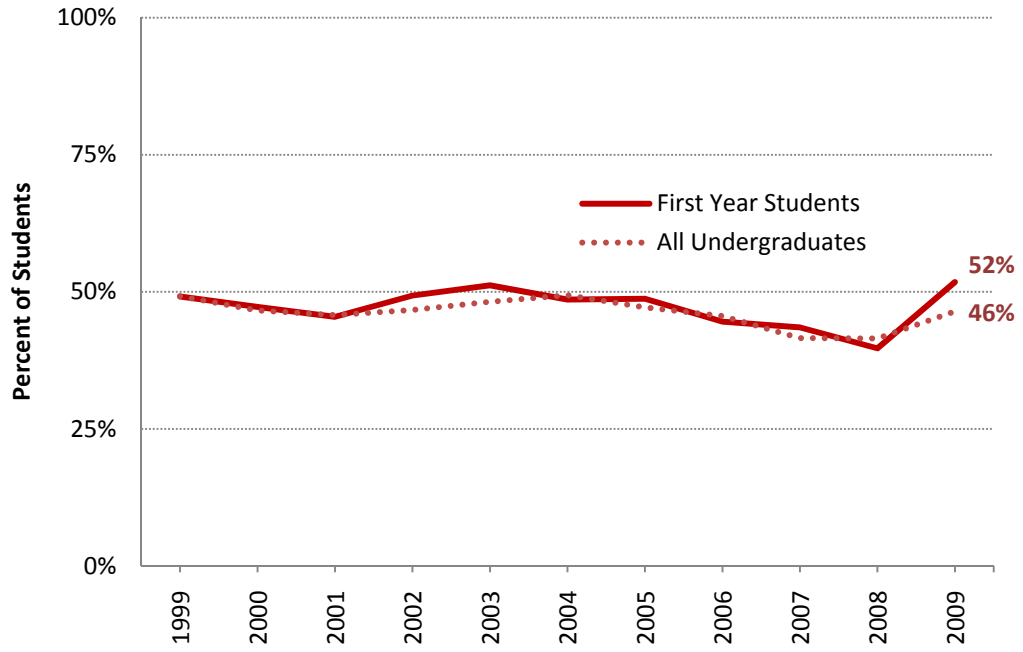


Figure B.6. Percent of First-Time Freshmen Entering in Fall through Early Decision, Fall 1992–Fall 2009



**Figure B.7. Percent of First-Time Freshmen and All Undergraduates Awarded Financial Aid, Fall 1999–Fall 2009**

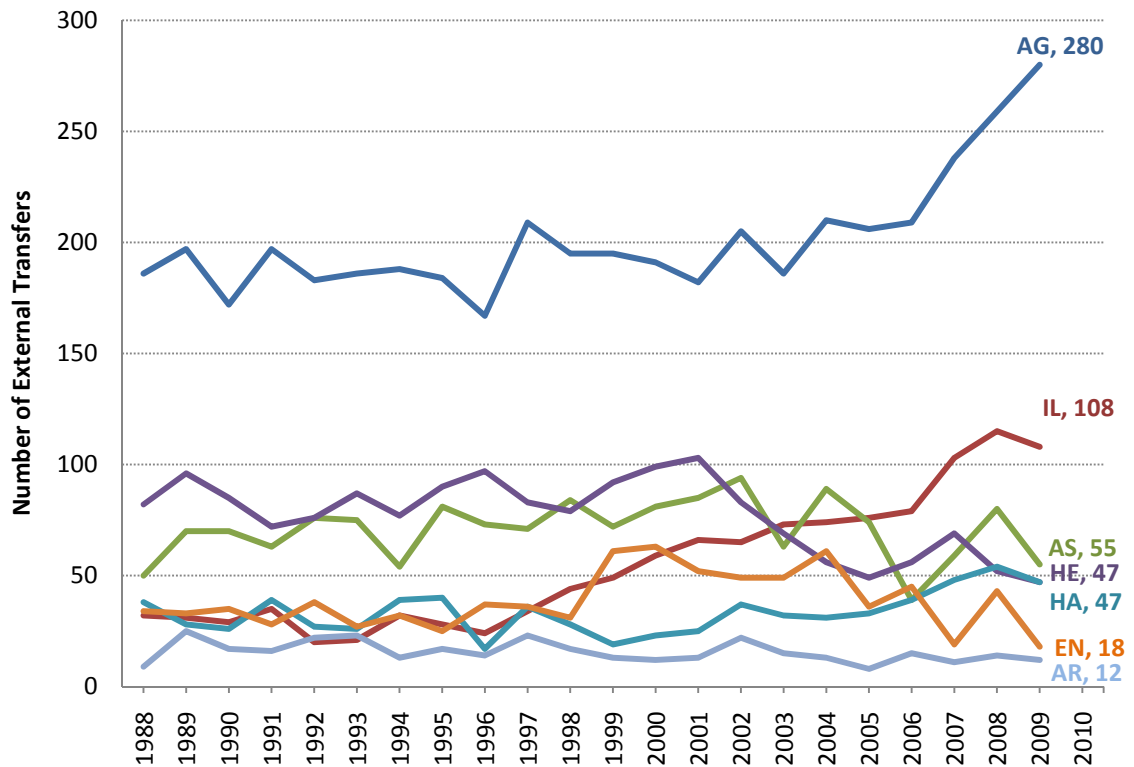


### C. External Transfers

#### Observations

- The College of Agriculture & Life Sciences admits the largest number of transfers (see Figure C.1)
- The number of new external transfers in the College of Agriculture & Life Sciences has increased from 206 in Fall 2005 to 280 in Fall 2009 (see Figure C.1)
- Since 1999, the School of Industrial & Labor Relations admits the highest percentage of transfers among the college’s new admits (see Figure C.2)
- The percentage of new students in the School of Industrial & Labor Relations that are transfers increased from a low of 13% in Fall 1996 to 42% in Fall 2009 (see Figure C.2)

Figure C.1. Number of Fall Undergraduate External Transfers Fall 1998–Fall 2009, by College



**Figure C.2. Percentage of Entering Undergraduates that are External Transfers Fall 1998–Fall 2009, by College**

